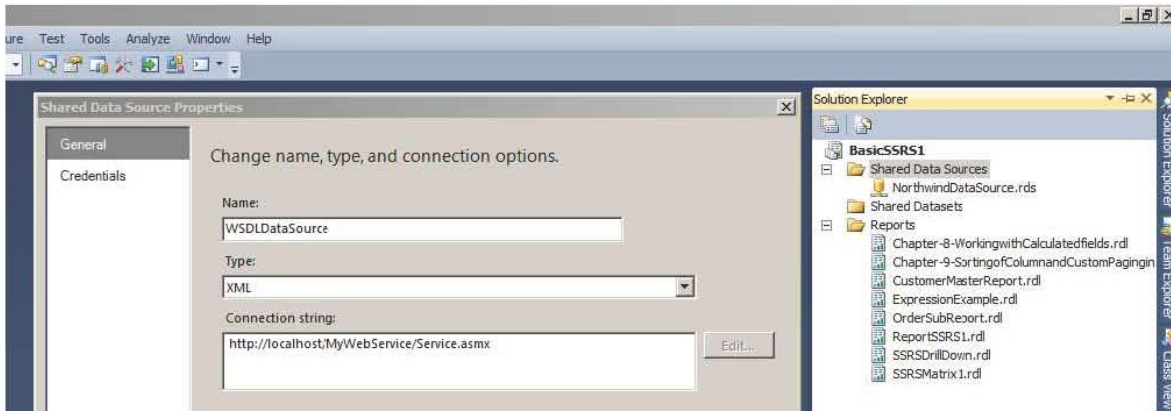


Chapter-11
Creating SSRS Report by consuming Web Service Data Source

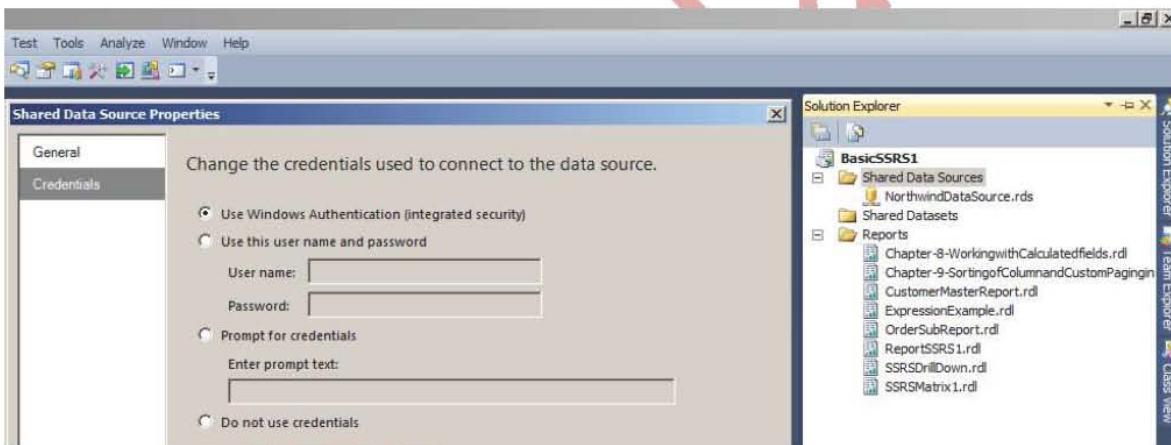
www.TexaLab.com

SSRS Reports can be developed by consuming the data returned from Web Services. In this chapter we are going to see how it is done. The steps for the same is

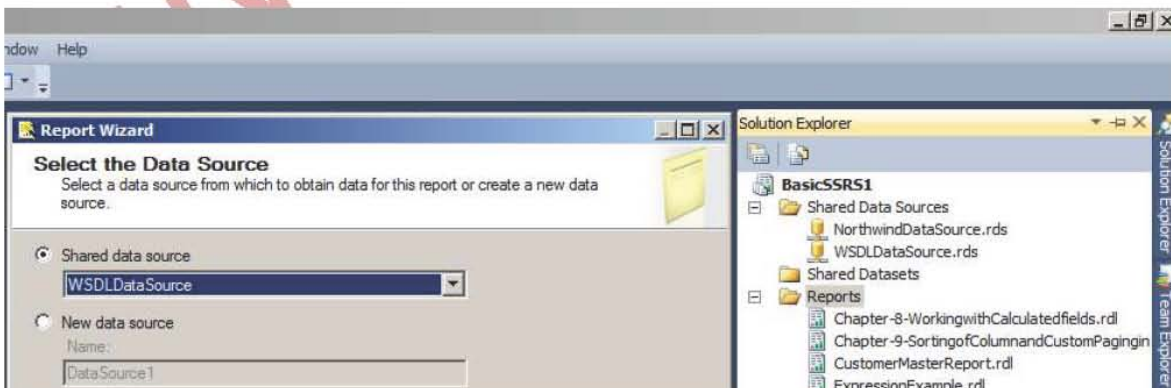
Step-1: Open the “BASICSSRS1” project of SSRS of Chapter-9 and create a new Shared Data source “WSDLDataSource” as shown in the image.



Click on credential and set the credential to “Use Windows Authentication(Integrated security)” as shown in the image and click OK Button as Shared Data Source with name “WSDLDataSource” will be created.



Step-2: Select the Data source “WSDLDataSource” for creating new report as shown in the image and click on next button

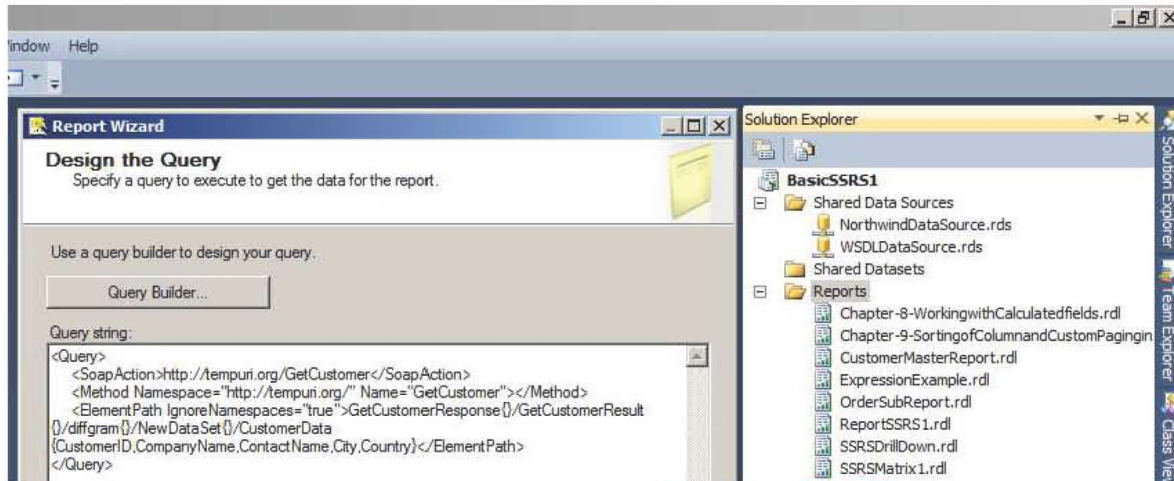


Paste the following query in the Query Box as shown in the image given below and click on next button

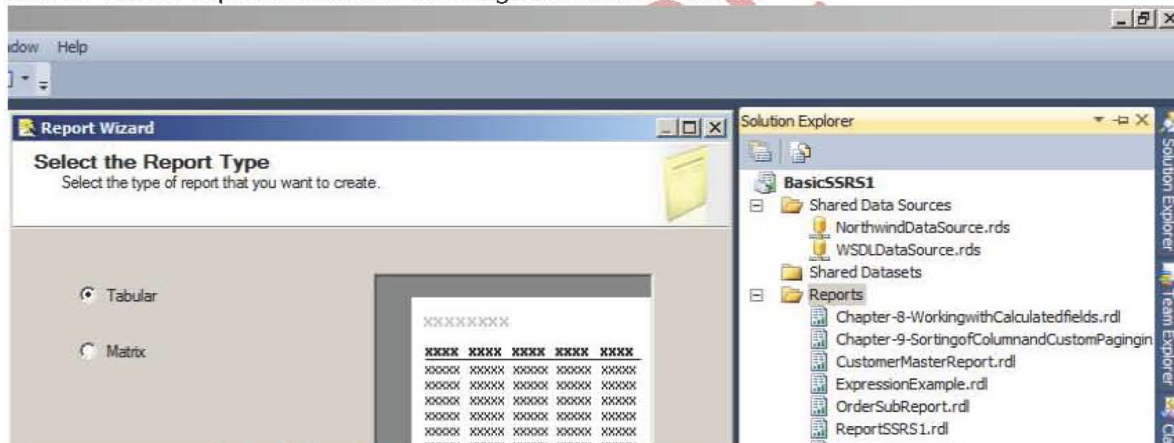
<Query>

```
<SoapAction>http://tempuri.org/GetCustomer</SoapAction>
<Method Namespace="http://tempuri.org/" Name="GetCustomer"></Method>
<ElementPath
```

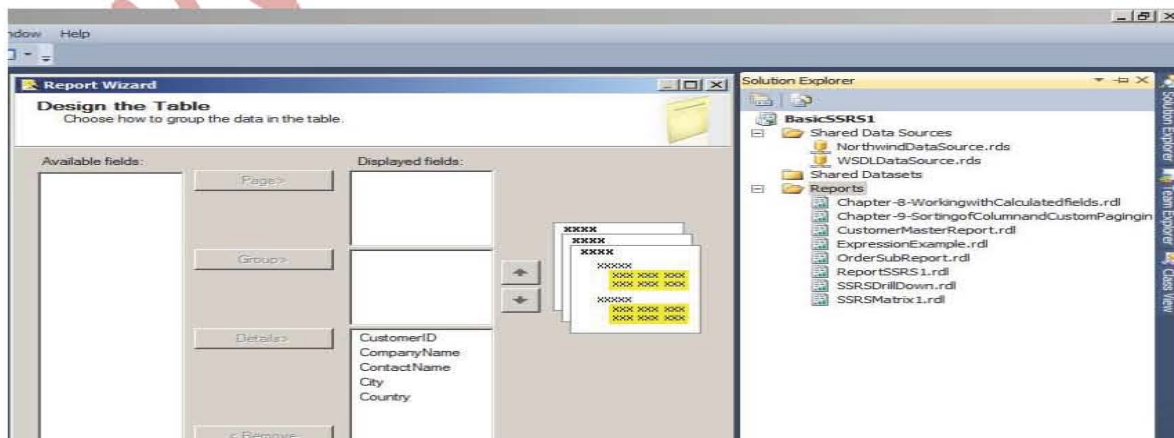
```
IgnoreNamespaces="true">GetCustomerResponse{/GetCustomerResult{/diffgram{/NewDataSet{/CustomerData{
CustomerID,CompanyName,ContactName,City,Country}</ElementPath>
</Query>
```



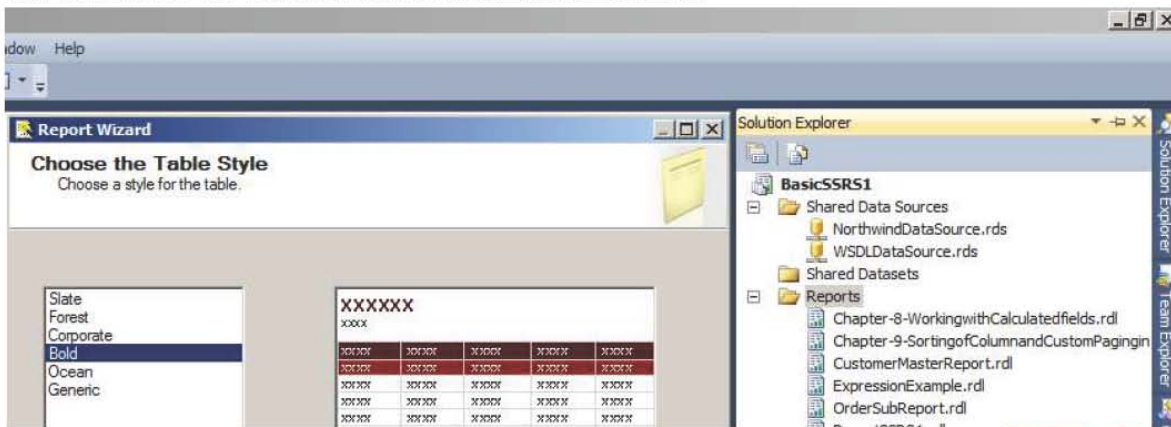
Choose Tabular Report as shown in the image and click next button



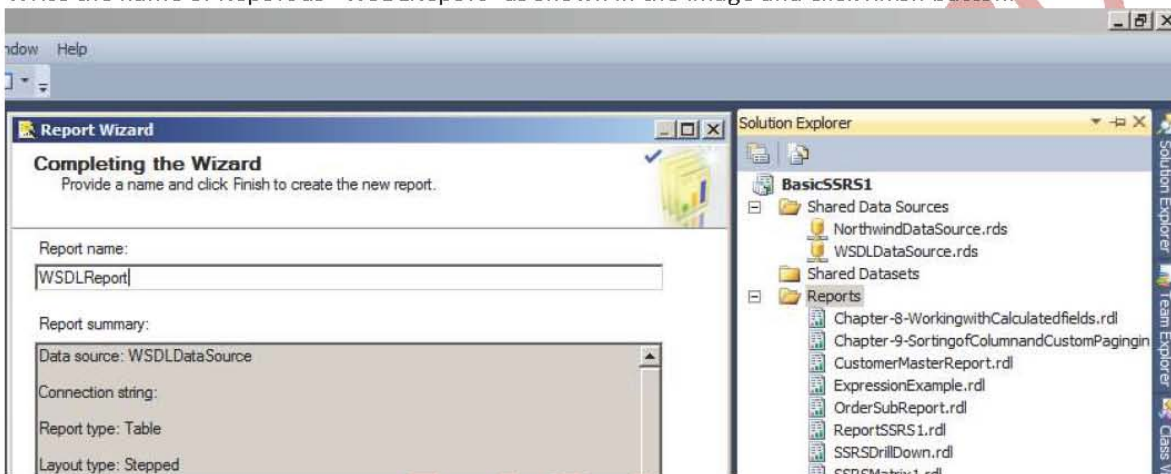
Now choose all the columns in the Details of the Report Wizard as show in the image



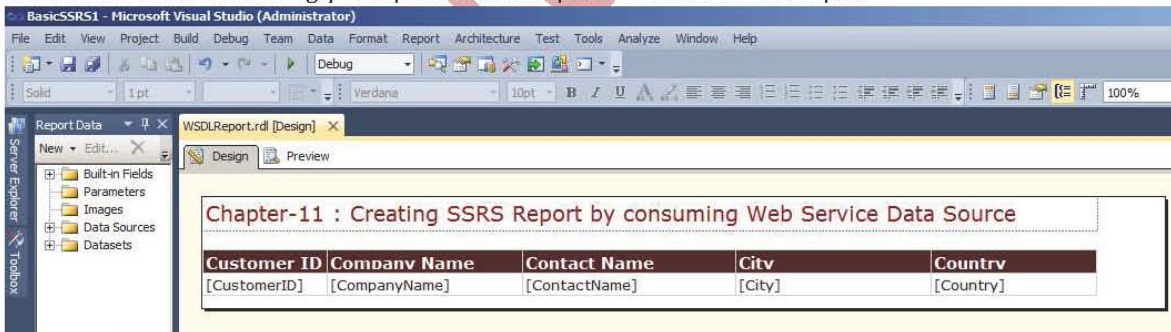
And then choose the Layout design as shown and click on next



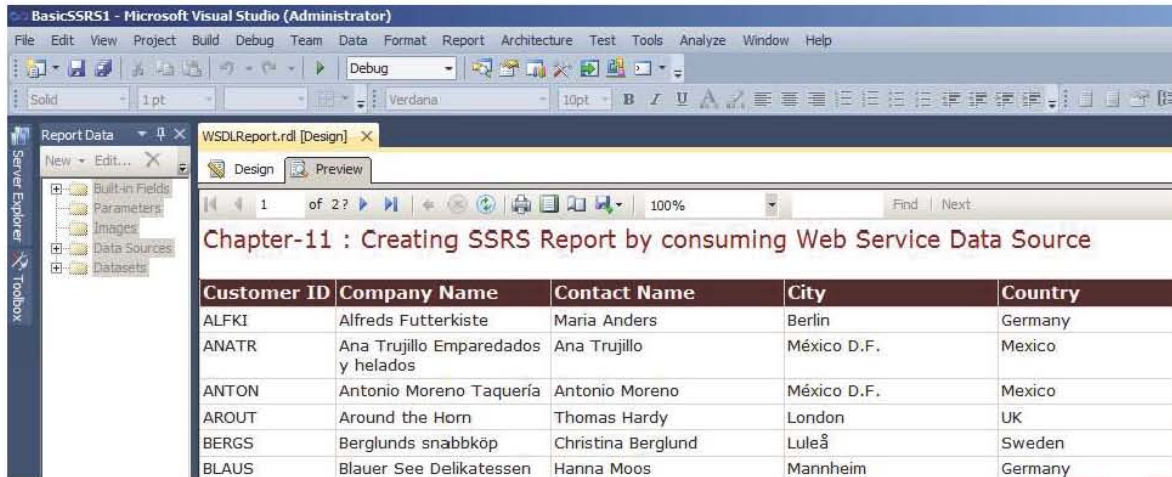
Write the name of Report as "WSDLReport" as shown in the Image and click finish button.



Desired Report will be Generated which will look like as screen given below. Change the Header as given and adjust the column width accordingly and preview the report to see the final output.



The final output will be as screen given below. This completes "**Chapter-11 : Creating SSRS Report by consuming Web Service Data Source**".



[Chapter-1: Creating a basic Tabular SSRS Report using Report Wizard](#)

[Chapter-2 : Report Deployment on SQL Server 2012 Reporting Server](#)

[Chapter-3:Opening/Calling the deployed SQL Server Reporting Server report from Asp.net](#)

[Chapter-4 Creating SSRS Matrix Report / Cross Tab Report](#)

[Chapter-5 Creating a Sub Report in SSRS](#)

[Chapter-6: Creating a Drill Down Report in SSRS](#)

[Chapter-7: Working with expressions and custom code in SSRS](#)

[Chapter-8-SSRS \(Reporting Services\) Working with Calculated fields](#)

www.TexaLab.com